



April 9, 2018

Secretary of the Interior Ryan Zinke
Department of the Interior
1849 C Street, N.W.
Washington, D.C. 20240

RE: Greater Little Mountain Coalition request for deferring the BLM 4th Quarter Oil and Gas Proposed Leases within the Greater Little Mountain Area and the Hoback to Red Desert Migration Corridor.

Dear Secretary Zinke,

The Bureau of Land Management recently announced 700,000 acres of preliminary oil and gas lease parcels available at the 4th Quarter Oil and Gas Lease Sale in southwest Wyoming (Figure 1).

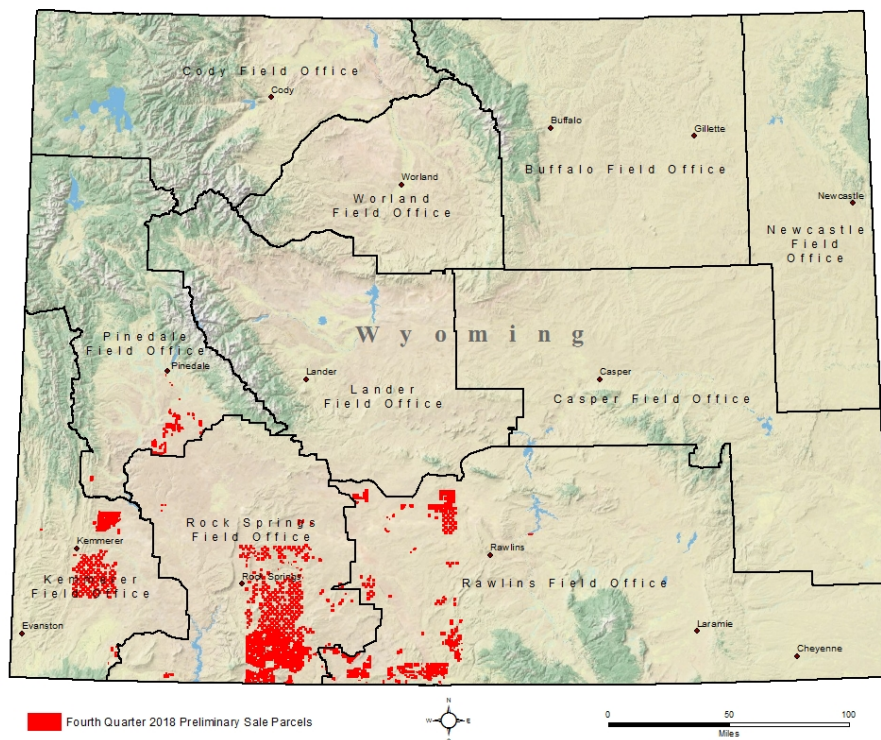


Figure 1. BLM 4th Quarter 2018 proposed lease sale preliminary parcels.

Many of the proposed leases are in the Greater Little Mountain Area (GLMA) and in the big game migration corridor designated by the Wyoming Game and Fish Department. The GLMA and the Red

Desert to Hoback migration corridor are important landscapes to Wyoming sportsmen, sportswomen, wildlife tourists and the local community. These lands provide irreplaceable habitats for world-class big game herds, sources of cold, clean water that sustain important fisheries, and recreation opportunities that are a way of life for Wyomingites.

The Greater Little Mountain Coalition requests deferring the BLM 4th Quarter Oil and Gas proposed leases within the GLMA until the completion of the BLM Rock Springs Resource Management Plan (RMP) and its Record of Decision (ROD). Given the recent Secretarial Order 3362 on winter range and migration corridors, we also recommend the Red Desert to Hoback leases be deferred until coordinators are named and implementing S.O. 3362 with guidance issued to state and field offices.

The Greater Little Mountain Coalition (GLMC) is a local group formed to pursue collaborative solutions. For more than a decade, sportsmen and sportswomen, community leaders, local government and numerous other stakeholders have been committed to community-driven solutions to resolve oil and gas conflicts on nearby public lands, resulting in a broadly-supported proposal for upfront planning that would safeguard much of Little Mountain's most important big game habitat and fisheries, while still allowing for responsible development where appropriate. The BLM agreed to consider this proposal through the ongoing revision to its RMP for the Rock Springs area. However, Instruction Memorandum No. 2018-034 issued on January 31, 2018 added a great deal of uncertainty as to whether the BLM will continue to honor the voices of local communities and the Coalition in developing a well-rounded, sustainable solution for the Greater Little Mountain Area. Additionally, Instruction Memorandum 2018-034 instructs the BLM will not routinely defer leasing when awaiting the completion of land use plans. This leaves several important wildlife, fisheries and scenic areas in the GLMA and the migration corridor open to being leased with antiquated stipulations.

By deferring these lease sales until the completion of the RMP, the Greater Little Mountain Coalition believes that, through the RMP revision process, an opportunity to develop an upfront plan for oil and gas leasing in these critical areas will properly balance the economic, conservation and social concerns presented by the lease sales within the GLMA and the migration corridor.

We strongly urge the deferral of the following leases in the GLMA and the Red Desert to Hoback migration corridor. We also note that there are several proposed leases that are not available for lease per the existing 1997 Green River Resource Management Plan. *

GLMA leases (Figure 2):

289,291,292,295,281,284,287,274,142,225,223,231,290,293,294,295,296,280,282,283,141,229,230,206, 285,286,288,273,275,276,277,246,148,208,187,198,250,251,252,240,241,243,242,245,147,196,199,200, 244,247,233,232,234,235,236,237,146,201,202,203,239,227,230,228,231,221,222,224,144,188,189,187, 181,183,182,184,185,186,160,150,153,156,190,191,192,193,194,195,278,267,268,271,272,270,269,266, 279.

Red Desert to Hoback migration corridor leases (Figure 3): 180, 218, 219, 220, 263, 304, 323.

4th Quarter (December) 2018 Wyoming Lease Sale Preliminary Parcels

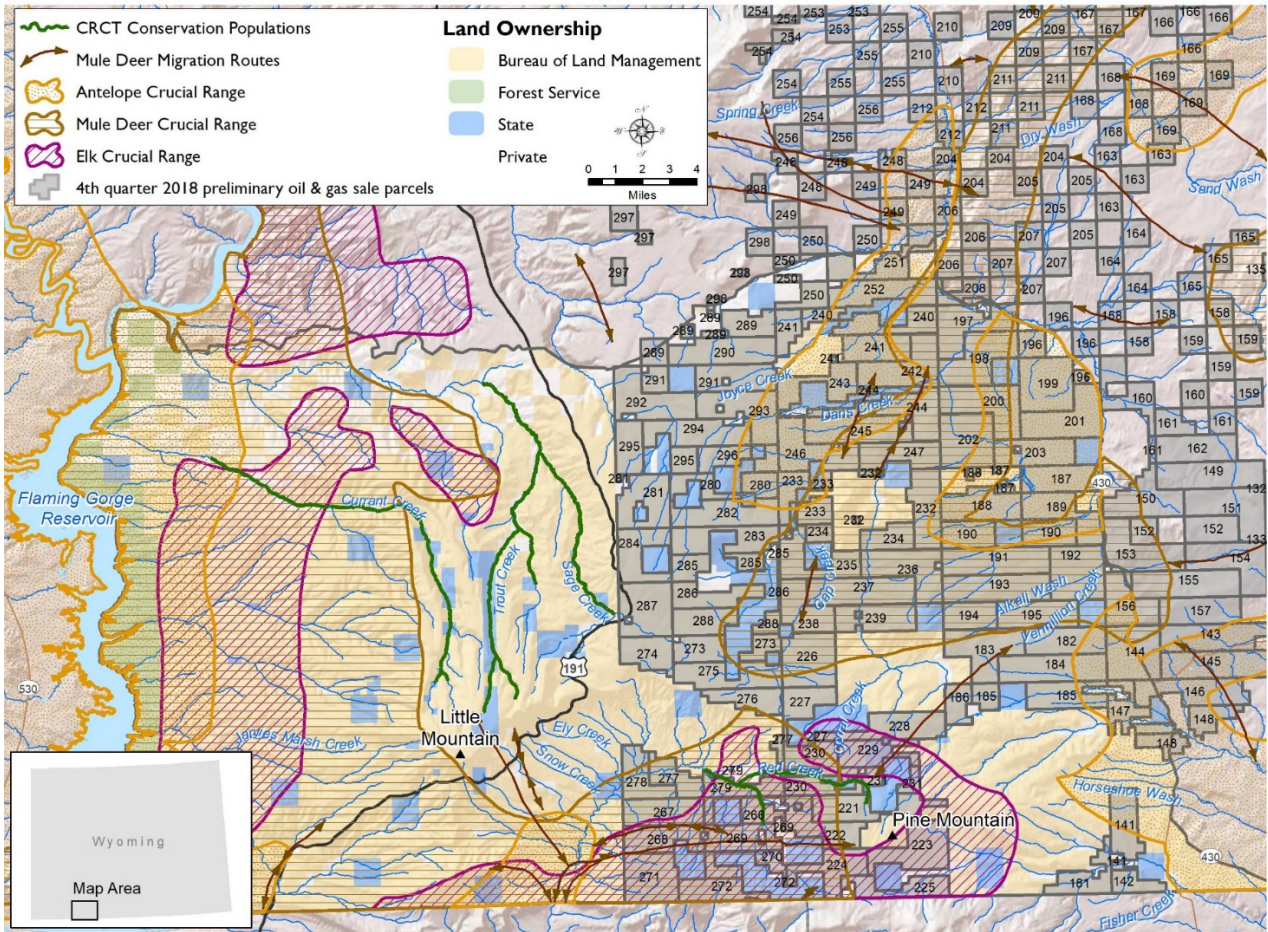


Figure 2. Greater Little Mountain Area proposed lease sale preliminary parcels.

**Note: The Red Creek ACEC is 'closed to fluid mineral leasing' under the 1997 Green River Resource Management Plan. This includes parcels: #266, 267, 268, 269, 270, 271, 272, 278, 279; and portions of 11 parcels: 221, 222, 224, 225, 227, 229, 230, 231, 275, 276, 277.*

Migration Corridor With Existing And Proposed Development

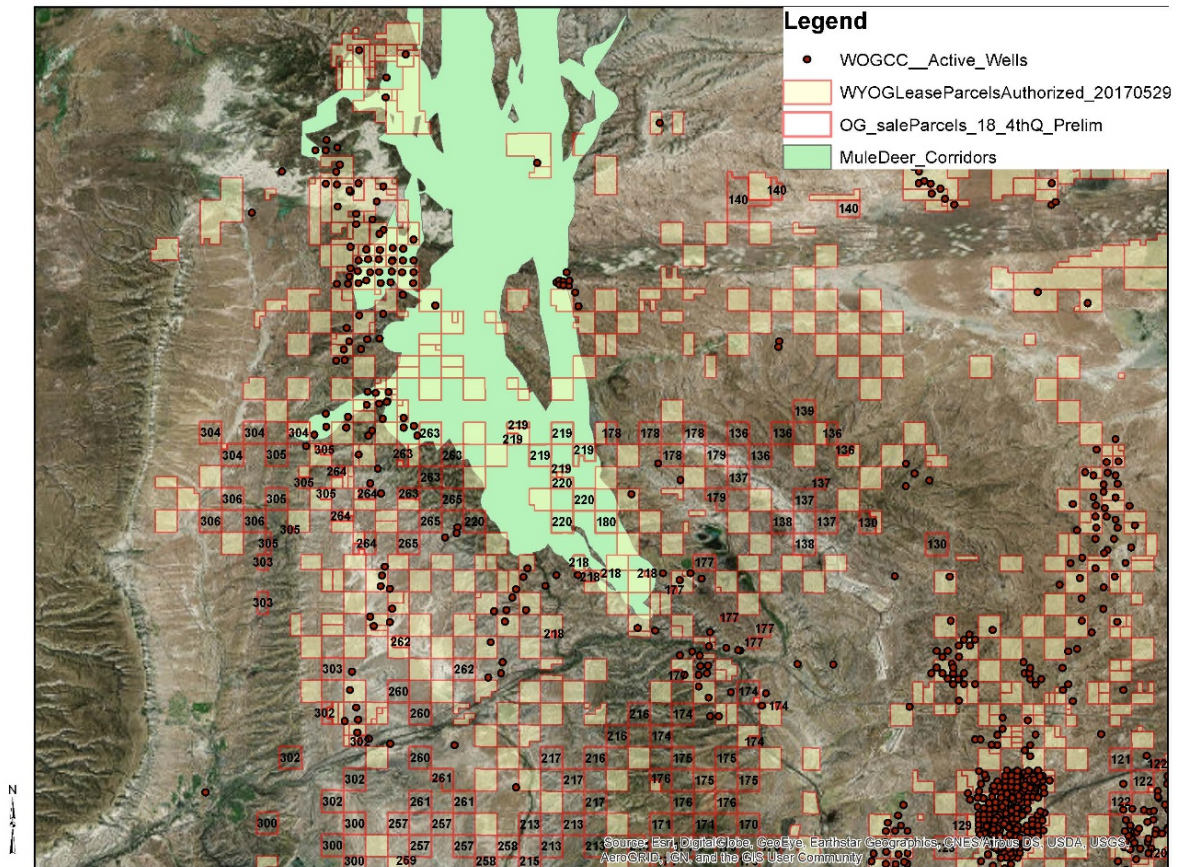


Figure 3. Red Desert to Hoback migration corridor proposed lease sale preliminary parcels.

Thank you for reviewing our request to protect these southwest Wyoming treasures. We look forward to your response and cordially invite you on a field tour of this area to discuss the opportunities and ideas we have developed through our Coalition.

Sincerely,

Josh Coursey, Muley Fanatic Foundation

Phone: 307-389-7495

josh@muleyfanatic.org

Craig Thompson

Phone: 307-389-2715

cthompson@westernwyoming.edu

Steve Martin, Bowhunters of Wyoming

Phone: 307-350-0486

smartin@wyoming.com

Nick Dobric, Theodore Roosevelt Conservation Partnership
Phone: 307-220-0436
ndobric@trcp.org

Tasha Sorensen, Trout Unlimited
Phone: 307-256-3446
TSorensen@tu.org

Joy Bannon, Wyoming Wildlife Federation
Phone: 307-287-0129
joybannon@wyomingwildlife.org

Monte Morlock, United Steelworkers Local 13214
Phone: 307-389-4701
mhmorlock@yahoo.com

Cc

Honorable Governor Matt Mead
Jessica Crowder, Natural Resource Policy Analyst, Governor's Office
Mary Jo Rugwell, State Director, BLM Wyoming State Office
Brian Steed, Acting BLM Director
Tim Wakefield, District Manager, BLM High Desert District
Kimberlee Foster, Field Manager, BLM Rock Springs Field Office
Mark Anselmi, President, Wyoming Game and Fish Commission District #2
John Kennedy, Wyoming Game and Fish Department
Scott Smith, Deputy Director, Wyoming Game and Fish Department
Angela Bruce, Wyoming Game and Fish Department
Sweetwater County Board of Commissioners
Travis McNiven, State Natural Resource Advisor, Senator John Barrasso
Representative John Freeman, Sweetwater County House District #60
Representative Stan Blake, Sweetwater County House District #39
Representative JoAnn Dayton, Sweetwater County House District #17
Senator John Hastart, Sweetwater County Senate District #13
Senator Liisa Anselmi-Dalton, Sweetwater County Senate District #12